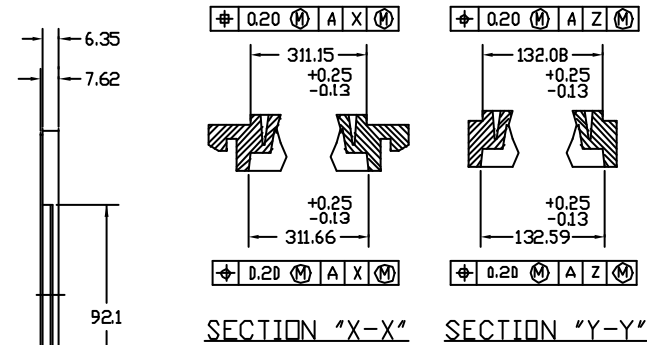
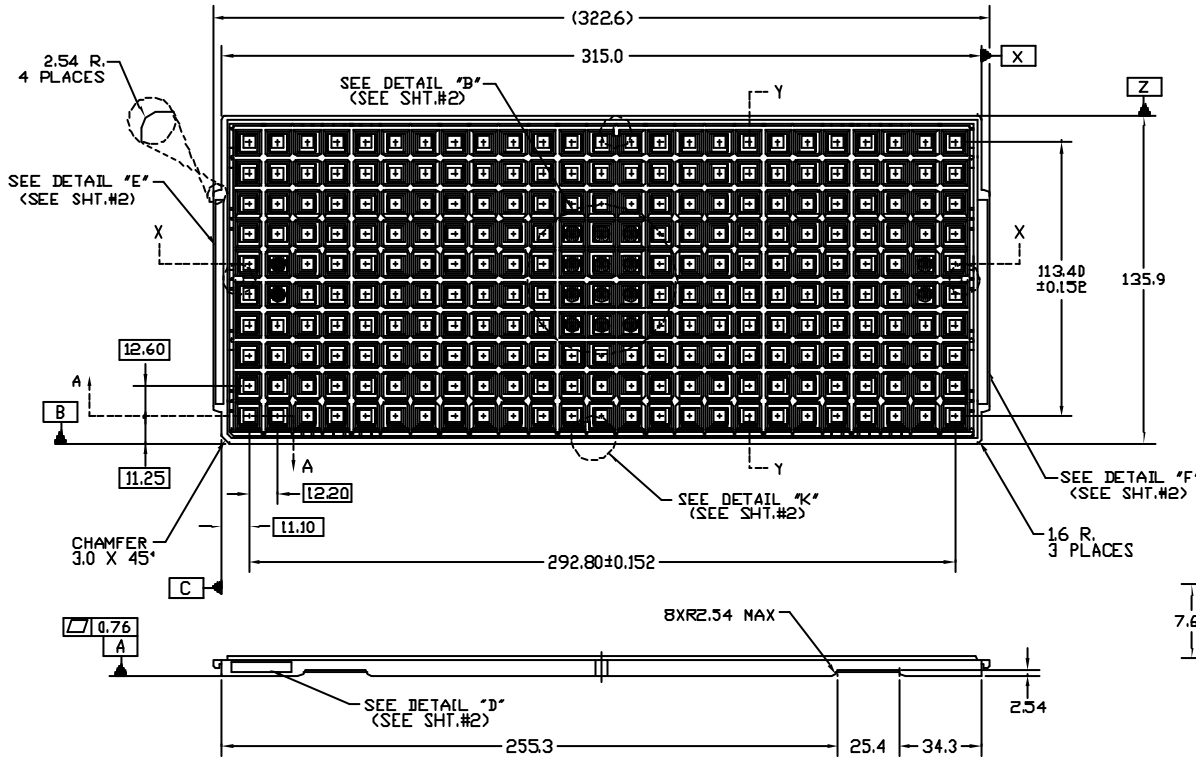
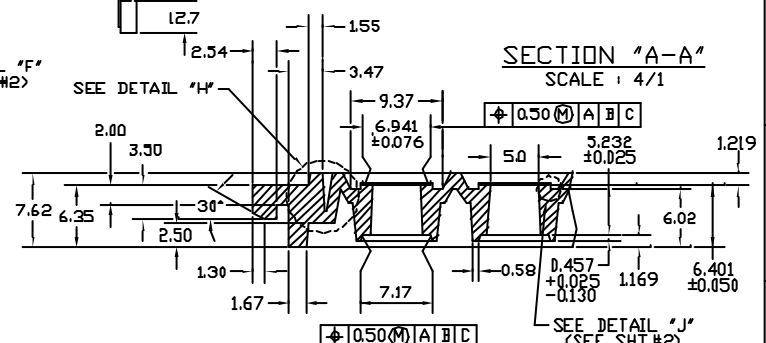


THIS DRAWING IS A DAEWON PROPRIETARY  
NO COPY IS ALLOWED WITHOUT DAEWON'S PERMISSION

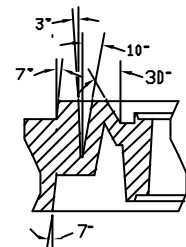
REV.	DESCRIPTION	DATE	APPROVED
A	INITIAL RELEASE	02/01/98	YB WON
B	SLIP LOCK INSTALLATION	02/14/98	YB WON



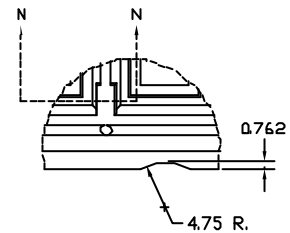
SECTION "X-X" SECTION "Y-Y"  
TRAY STACKING DETAIL  
SCALE : 3/1



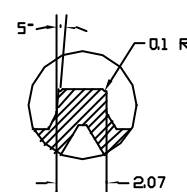
SECTION "A-A"  
SCALE : 4/1



DETAIL "H"  
SCALE : 6/1



DETAIL "K"  
SCALE : 4/1

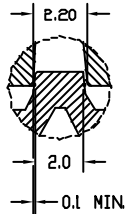


SECTION "N-N"  
SLIP LOCK (TAB)  
4 PLACES

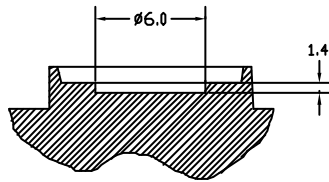
<NOTE> CELL COUNT IS 10 X 25 = 250

NON-BAKEABLE	ABS+CF	REJ	60°C MAX.	123-0707-1261 1262939
NON-BAKEABLE	ABS+CF	BLUE	60°C MAX.	123-0707-126 1252135
BAKEABLE	MPSU	BLACK	125°C BAKE / 140°C MAX	123-0707-113 1252127
BAKEABLE	PSU	BLACK	150°C BAKE / 165°C MAX	123-0707-112
BAKEABLE	PES	BLACK	150°C BAKE / 180°C MAX	123-0707-111 1212737
DESCRIPTION	MATERIAL	COLOR	TEMP °C	PART NO. ITEM NO.

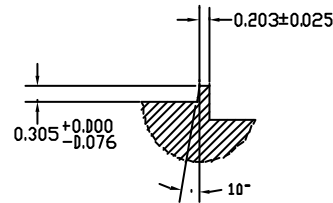
DECIMAL X ± 0.25 XXX ± 0.13 XXX ± 0.13	ANGULAR 10.5°	PROJECTION	Daewon Semiconductor Packaging Inst. Co. 6480-1, Dhan Hyun-Dong, Ha-Nan, Gyeonggi-Do, Korea.	
MATERIAL	FINISH	APPROVALS	DATE	TITLE
DRAWN KY KJM	ENGR KY KJM	JS LEE	02/04/98	DAEWON STANDARD MOLDED SHIPPING TRAY, JEDEC L/P TQFP 7X7XL0T BODY
RELEASED YB WON	SCALE	02/14/98	1/1	SIZE A1
DO NOT SCALE DRAWING	DATE	02/14/98	1/1	ITEM NO. JTL-0707-10T
				REV. B
				SHEET 1 of 2



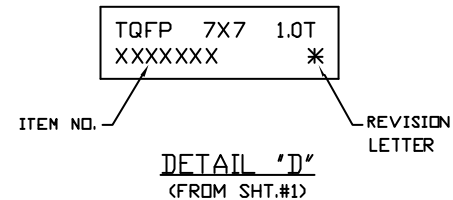
SLIP LOCK SECTION  
SCALE : 10/1



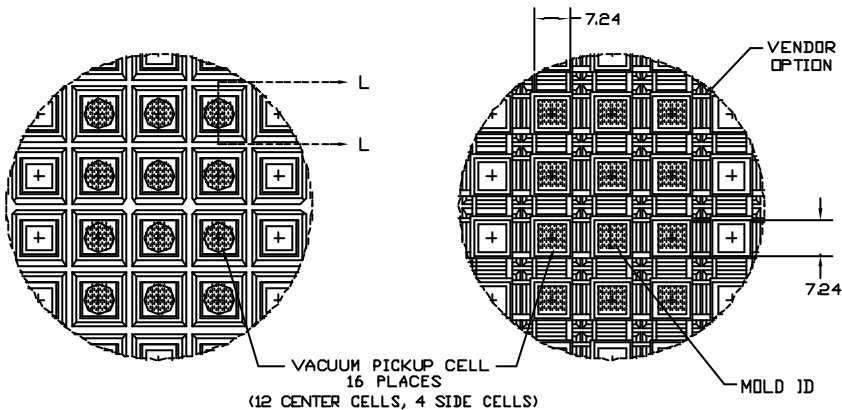
SECTION "L-L"  
SCALE : NONE



DETAIL "J"  
SCALE : 20/1  
(FROM SHT.#1)



NOTCH FENCE  
SCALE : 2/1

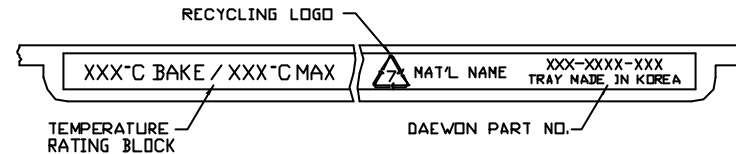


TOP VIEW  
DETAIL "B"  
SCALE : 2/1  
(FROM SHT.#1)

BOTTOM VIEW  
DETAIL "B"  
SCALE : 2/1  
(FROM SHT.#1)



DETAIL "E"  
(FROM SHT.#1)



DETAIL "F"  
(FROM SHT.#1)

TITLE			
DAEWON STANDARD MOLDED SHIPPING TRAY, JEDEC L/P TQFP 7X7X1.0T BODY			
DAEWON	REV. NO. A1	JTL-07D7-1.0T	REV. B
SCALE 1/1		SHEET 2	OF 2